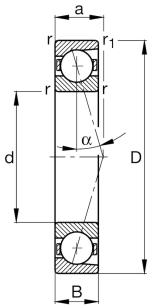
**FAG****B71907-E-T-P4S-UL**

## Spindle bearing

Spindle bearing B719.-E, adjusted, in pairs or sets, contact angle  $\alpha = 25^\circ$ , restricted tolerances

## Technical information

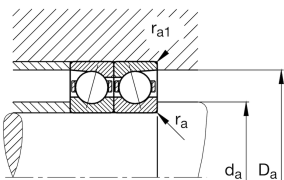
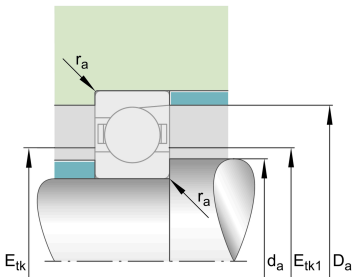


## Your current product variant

Preload class	L	Preload light
Contact angle	E	Contact angle $25^\circ$
Tolerance class	P4S	Tolerance class P4S, FAG standard better than P4 to ISO 492:2023
Type of Seal	Without	Not sealed
Cage	T	Laminated fabric cage
Arrangement bearing set	U	Single bearing

## Main Dimensions &amp; Performance Data

d	35 mm	Bore diameter
D	55 mm	Outside diameter
B	10 mm	Width
$C_r$	11.500 N	Basic dynamic load rating, radial
$C_{0r}$	6.500 N	Basic static load rating, radial
$C_{ur}$	680 N	Fatigue load limit, radial
$n_G$ Grease	24.000 1/min	Limiting speed for grease lubrication
$n_G$ Oil	36.000 1/min	Limiting speed for oil lubrication
$\approx m$	76,53 g	Weight





### Mounting dimensions

$d_a$	40 mm	Diameter shaft shoulder
$d_a$	h12	Diameter shaft shoulder clearance
$D_a$	51,5 mm	Shoulder diameter outer ring
$D_a$	H12	Shoulder diameter outer ring clearance
$r_{a \max}$	0,6 mm	Maximum recess radius
$r_{a1 \max}$	0,15 mm	Maximum recess radius
$E_{tk \min}$	42,6 mm	Minimum diameter injection pitch
$E_{tk \max}$	44 mm	Maximum diameter injection pitch
$E_{tk1 \min}$	42,6 mm	Minimum diameter injection pitch
$E_{tk1 \max}$	44 mm	Maximum diameter injection pitch
$a$	15,6 mm	Distance between the apexes of the pressure cones

### Dimensions

$r_{\min}$	0,6 mm	Minimum chamfer dimension
$r_{1 \min}$	0,6 mm	Minimum chamfer dimension
$\alpha$	25 °	Contact angle

### Temperature range





$T_{\min}$	-30 °C	Operating temperature min.
$T_{\max}$	100 °C	Operating temperature max.



### Additional information

$F_{VL}$	60 N	Preload force light
$F_{VM}$	273 N	Preload force medium
$F_{VH}$	613 N	Preload force heavy
$K_{aEL}$	174 N	Lift-off force light
$K_{aEM}$	820 N	Lift-off force medium
$K_{aEH}$	1.910 N	Lift-off force heavy
$c_{aL}$	73 N/ $\mu$ m	Axial rigidity light
$c_{aM}$	129 N/ $\mu$ m	Axial rigidity medium
$c_{aH}$	179 N/ $\mu$ m	Axial rigidity heavy

### Characteristics

-  Radial load
-  Axial load in one direction
-  Grease Lubrication
-  Oil Lubrication
-  Not sealed