



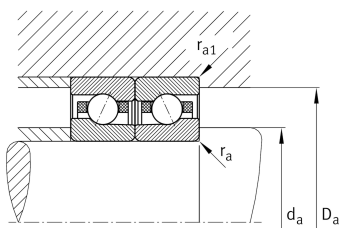
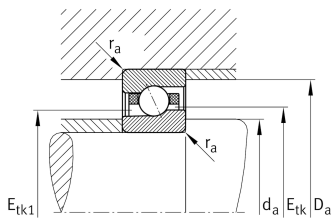
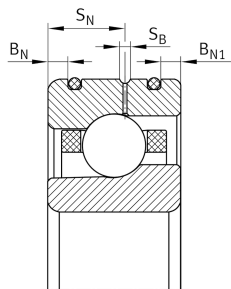
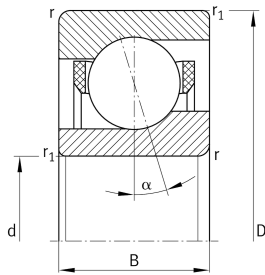
**FAG**

**VCM71912-CDLR-T-P4S-UL-XL**

High speed spindle bearing

High speed spindle bearing VCM719...-CDLR, adjusted, in pairs or sets, contact angle  $\alpha = 17^\circ$ , with ceramic balls, rings made from Vacrodur, restricted tolerances, for direct oil feed via outer ring, with inserted O rings

Technical information



Your current product variant

Preload class	L	Preload light
Contact angle	Contact angle 17°	Contact angle 17°
Sealing	Without	Not sealed
Outer shape	DLR	Direct lubrication, annular slots with O rings
Cage	T	Laminated fabric cage
Tolerance class	P4S	Tolerance class P4S, FAG standard better than P4 to ISO 492:2023
Arrangement bearing set	U	Single bearing

Main Dimensions & Performance Data

d	60 mm	Bore diameter
D	85 mm	Outside diameter
B	13 mm	Width
C <sub>r</sub>	46.500 N	Basic dynamic load rating, radial
C <sub>0r</sub>	14.700 N	Basic static load rating, radial
C <sub>ur</sub>	750 N	Fatigue load limit, radial
n <sub>G</sub> Grease	28.000 1/min	Limiting speed for grease lubrication
n <sub>G</sub> Oil	45.000 1/min	Limiting speed for oil lubrication
≈m	0,146 kg	Weight



### Mounting dimensions

$d_a$	65 mm	Diameter shaft shoulder
$d_a$	h12	Diameter shaft shoulder clearance
$D_a$	80,5 mm	Shoulder diameter outer ring
$D_a$	H12	Shoulder diameter outer ring clearance
$r_{a \max}$	0,6 mm	Maximum recess radius
$r_{a1 \max}$	0,3 mm	Maximum recess radius
$B_N$	2,8 mm	Distance ring grooves
$B_{N1}$	2 mm	Distance ring grooves
$S_N$	7,6 mm	Distance to lubrication hole
$S_B$	1,4 mm	Width of lubricating groove
$a$	17,6 mm	Distance between the apexes of the pressure cones

### Dimensions

$r_{\min}$	1 mm	Minimum chamfer dimension
$r_{1 \min}$	0,6 mm	Minimum chamfer dimension
$\alpha$	17 °	Contact angle

### Temperature range


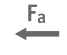


$T_{\min}$	-30 °C	Operating temperature min.
$T_{\max}$	100 °C	Operating temperature max.



### Additional information

$F_{VL}$	73 N	Preload force light
$F_{VM}$	192 N	Preload force medium
$F_{VH}$	403 N	Preload force heavy
$K_{aEL}$	212 N	Lift-off force light
$K_{aEM}$	570 N	Lift-off force medium
$K_{aEH}$	1.225 N	Lift-off force heavy
$c_{aL}$	54 N/ $\mu$ m	Axial rigidity light
$c_{aM}$	77 N/ $\mu$ m	Axial rigidity medium
$c_{aH}$	103 N/ $\mu$ m	Axial rigidity heavy

### Characteristics

-  Radial load
-  Axial load in one direction
-  Oil Lubrication
-  Not sealed