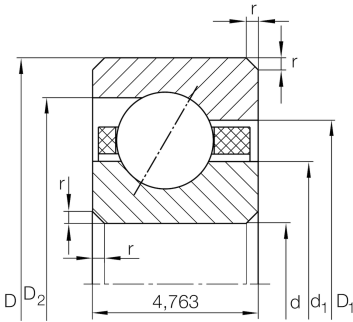


**CSEAA015-TV** [↗](#)

Angular contact ball bearing

Angular contact ball bearing, Thin section bearing CSEAA..-TV, plastic cage

Technical information

**Your current product variant**

Logistical code	HLE	-
Type of Seal	Without	Not sealed
Cage	TV	Plastic Cage made from PA66
Tolerance class	PL1	Class PL1, Normal
Lubricant	Without	Bearing not greased

Main Dimensions & Performance Data

d	38,1 mm	Bore diameter
D	47,625 mm	Outside diameter
B	4,763 mm	Width
C _r	2.050 N	Basic dynamic load rating, radial
C _{0r}	1.860 N	Basic static load rating, radial
n _G	14.300 1/min	Limiting speed
≈m	20 g	Weight



Dimensions

r_{\min}	0,38 mm	Minimum chamfer dimension
d_1	41,7 mm	Shoulder diameter inner ring
D_1	44,1 mm	Shoulder diameter on outer ring wide side face
D_2	45,1 mm	Shoulder diameter on outer ring small side face
α	30 °	Contact angle

Temperature range

T_{\min}	-30 °C	Operating temperature min.
T_{\max}	120 °C	Operating temperature max.

Characteristics

-  Radial load
-  Axial load in one direction
-  Grease Lubrication
-  Oil Lubrication
-  Not sealed