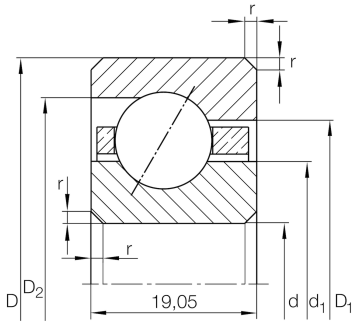


**CSEF120** [↗](#)

Angular contact ball bearing

Angular contact ball bearing, Thin section bearing CSEF, brass sheet metal cage

## Technical information

**Your current product variant**

|                 |         |                     |
|-----------------|---------|---------------------|
| Logistical code | HLE     | -                   |
| Type of Seal    | Without | Not sealed          |
| Cage            | YP      | Brass sheet metal   |
| Tolerance class | PL1     | Class PL1, Normal   |
| Lubricant       | Without | Bearing not greased |

**Main Dimensions & Performance Data**

|                 |             |                                   |
|-----------------|-------------|-----------------------------------|
| d               | 304,8 mm    | Bore diameter                     |
| D               | 342,9 mm    | Outside diameter                  |
| B               | 19,05 mm    | Width                             |
| C <sub>r</sub>  | 35.000 N    | Basic dynamic load rating, radial |
| C <sub>0r</sub> | 69.000 N    | Basic static load rating, radial  |
| n <sub>G</sub>  | 1.660 1/min | Limiting speed                    |
| ≈m              | 2,36 kg     | Weight                            |








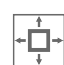
### Dimensions

|           |          |   |
|-----------|----------|---|
| $r_{min}$ | 2 mm     | Minimum chamfer dimension                       |
| $d_1$     | 318,9 mm | Shoulder diameter inner ring                    |
| $D_1$     | 328,8 mm | Shoulder diameter on outer ring wide side face  |
| $D_2$     | 332,8 mm | Shoulder diameter on outer ring small side face |
| $\alpha$  | 30 °     | Contact angle                                   |

### Temperature range

|           |        |                            |
|-----------|--------|----------------------------|
| $T_{min}$ | -30 °C | Operating temperature min. |
| $T_{max}$ | 120 °C | Operating temperature max. |

### Characteristics

-  Radial load
-  Axial load in one direction
-  Grease Lubrication
-  Oil Lubrication
-  Not sealed
-  Large bearing