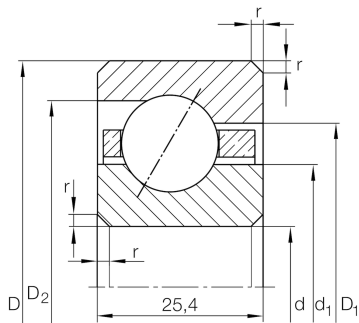


**CSEG075**

Angular contact ball bearing

Angular contact ball bearing, Thin section bearing CSEG, brass sheet metal cage

## Technical information

**Your current product variant**

Logistical code	HLE	-
Type of seal	Without	Not sealed
Cage	YP	Brass sheet metal
Tolerance class	PL1	Class PL1, Normal
Lubricant	Without	Bearing not greased

**Main Dimensions & Performance Data**

d	190,5 mm	Bore diameter
D	241,3 mm	Outside diameter
B	25,4 mm	Width
C <sub>r</sub>	47.000 N	Basic dynamic load rating, radial
C <sub>0r</sub>	63.000 N	Basic static load rating, radial
n <sub>G</sub>	2.480 1/min	Limiting speed
≈m	2,81 kg	Weight





### Dimensions

$r_{min}$	2 mm	Minimum chamfer dimension
$d_1$	209,4 mm	Shoulder diameter inner ring
$D_1$	222,5 mm	Shoulder diameter on outer ring wide side face
$D_2$	228,3 mm	Shoulder diameter on outer ring small side face
$\alpha$	30 °	Contact angle

### Temperature range

$T_{min}$	-30 °C	Operating temperature min.
$T_{max}$	120 °C	Operating temperature max.

### Characteristics

-   $F_r$  Radial load
-   $F_a$  Axial load in one direction
-  Grease Lubrication
-  Oil Lubrication
-  Not sealed