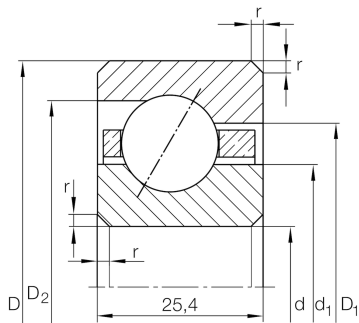


**CSEG120**

Angular contact ball bearing

Angular contact ball bearing, Thin section bearing CSEG, brass sheet metal cage

Technical information

**Your current product variant**

| | | |
|-----------------|---------|---------------------|
| Logistical code | HLE | - |
| Sealing | Without | Not sealed |
| Cage | YP | Brass sheet metal |
| Tolerance class | PL1 | Class PL1, Normal |
| Lubricant | Without | Bearing not greased |

Main Dimensions & Performance Data

| | | |
|-----------------|-------------|-----------------------------------|
| d | 304,8 mm | Bore diameter |
| D | 355,6 mm | Outside diameter |
| B | 25,4 mm | Width |
| C _r | 55.000 N | Basic dynamic load rating, radial |
| C _{0r} | 98.000 N | Basic static load rating, radial |
| n _G | 1.610 1/min | Limiting speed |
| ≈m | 4,29 kg | Weight |



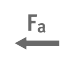

Dimensions

| | | |
|------------|----------|---|
| r_{\min} | 2 mm | Minimum chamfer dimension |
| d_1 | 323,7 mm | Shoulder diameter inner ring |
| D_1 | 336,8 mm | Shoulder diameter on outer ring wide side face |
| D_2 | 342,4 mm | Shoulder diameter on outer ring small side face |
| α | 30 ° | Contact angle |

Temperature range

| | | |
|------------|--------|----------------------------|
| T_{\min} | -30 °C | Operating temperature min. |
| T_{\max} | 120 °C | Operating temperature max. |

Characteristics

| | |
|---|-----------------------------|
|  | Radial load |
|  | Axial load in one direction |
|  | Grease Lubrication |
|  | Oil Lubrication |
|  | Not sealed |
|  | Large bearing |