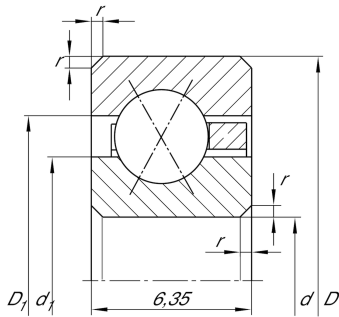


**CSXA030**

## Four-point contact bearing

Four point contact bearing, Thin section bearing CSXA, brass sheet metal cage

## Technical information



## Your current product variant

Logistical code	HLE	-
Cage	YH	Brass sheet metal
Radial internal clearance	PL1	Class PL1, Normal
Lubricant	Without	Bearing not greased

## Main Dimensions &amp; Performance Data

d	76,2 mm	Bore diameter
D	88,9 mm	Outside diameter
B	6,35 mm	Width
$C_r$	5.100 N	Basic dynamic load rating, radial
$C_{0r}$	6.800 N	Basic static load rating, radial
$n_G$	4.550 1/min	Limiting speed
$\approx m$	70 g	Weight

## Dimensions







$r_{\min}$	0,6 mm	Minimum chamfer dimension
$d_1$	80,9 mm	Shoulder diameter inner ring
$D_1$	84,2 mm	Shoulder diameter outer ring
$\alpha$	30 °	Contact angle



### Temperature range

$T_{\min}$	-30 °C	Operating temperature min.
$T_{\max}$	120 °C	Operating temperature max.

### Characteristics

-  Radial load
-  Axial load in one direction
-  Axial load in two directions
-  Grease Lubrication
-  Oil Lubrication
-  Not sealed