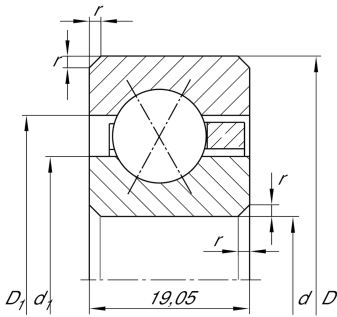


**CSXF120** [↗](#)

Four-point contact bearing

Four point contact bearing, Thin section bearing CSXF, brass sheet metal cage

Technical information

**Your current product variant**

Logistical code	HLE	-
Sealing	Without	Not sealed
Cage	YH	Brass sheet metal
Tolerance class	PL1	Class PL1, Normal
Radial internal clearance	PL1	Class PL1, Normal
Lubricant	Without	Bearing not greased

Main Dimensions & Performance Data

d	304,8 mm	Bore diameter
D	342,9 mm	Outside diameter
B	19,05 mm	Width
C_r	46.000 N	Basic dynamic load rating, radial
C_{0r}	100.000 N	Basic static load rating, radial
n_G	840 1/min	Limiting speed
m	2,36 kg	Weight

Dimensions







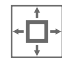
r_{min}	2 mm	Minimum chamfer dimension
d_1	318,9 mm	Shoulder diameter inner ring
D_1	328,8 mm	Shoulder diameter outer ring
α	30 °	Contact angle



Temperature range

T_{min}	-30 °C	Operating temperature min.
T_{max}	120 °C	Operating temperature max.

Characteristics

-  Radial load
-  Axial load in one direction
-  Axial load in two directions
-  Grease Lubrication
-  Oil Lubrication
-  Not sealed
-  Large bearing