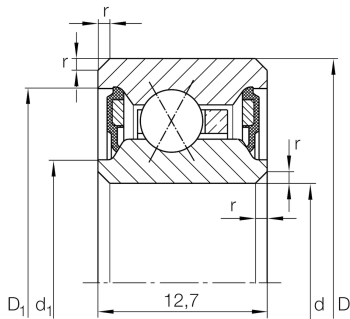


**CSXU055-2RS**

Four-point contact bearing

Four point contact bearing, Thin section bearing CSXU..-2RS, seals, brass sheet metal cage

Technical information



Your current product variant

Logistical code	HLE	-
Sealing	2RS	Contact seal on both sides
Cage	YH	Brass sheet metal
Tolerance class	PL1	Class PL1, Normal
Radial internal clearance	PL1	Class PL1, Normal
Lubricant	Lubricating grease	

Main Dimensions & Performance Data

d	139,7 mm	Bore diameter
D	158,75 mm	Outside diameter
B	12,7 mm	Width
C_r	11.600 N	Basic dynamic load rating, radial
C_{0r}	19.600 N	Basic static load rating, radial
n_G	1.540 1/min	Limiting speed
m	340 g	Weight




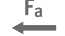




Dimensions

r_{min}	0,38 mm	Minimum chamfer dimension
d_1	146,7 mm	Shoulder diameter inner ring
D_1	151,7 mm	Shoulder diameter outer ring
d_1	143,5 mm	Caliber diameter inner ring
D_1	153,5 mm	Caliber diameter outer ring
α	30 °	Contact angle

Temperature range

T_{min}	-25 °C	Operating temperature min.
T_{max}	120 °C	Operating temperature max.

Characteristics

-  F_r Radial load
-  F_a Axial load in one direction
-  F_a Axial load in two directions
-  L_h Lifetime lubrication, freedom from maintenance
-  Grease Lubrication
-  Sealed on both sides