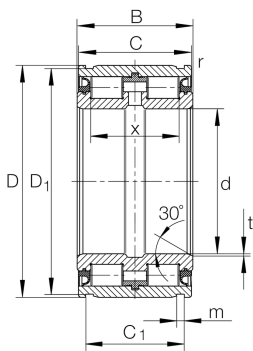


**SL045020-D**

Cylindrical roller bearing

Cylindrical roller bearing SL04..-D, full complement roller set, two-row, locating bearing, central rib on outer ring, 3 ribs on inner ring, type SL04

Technical information

**Your current product variant**

Design	D	New outer Contour
Radial internal clearance	CN (Group N)	Normal internal clearance
Tolerance class	PN	Normal (ISO 492:2023)
Number of rows	2	Double-row design

Main Dimensions & Performance Data

d	100 mm	Bore diameter
D	150 mm	Outside diameter
B	67 mm	Width
C_r	330.000 N	Basic dynamic load rating, radial
C_{0r}	550.000 N	Basic static load rating, radial
C_{ur}	79.000 N	Fatigue load limit, radial
n_G Grease	1.300 1/min	Limiting speed for grease lubrication
$\approx m$	3,674 kg	Weight



Mounting dimensions

C _{a1}	54 mm	Mounting dim for snap ring WRE (not included in delivery) Tolerance: 0/-0,2
C _{a2}	51 mm	Mounting dim for retaining ring to DIN 471 (not incl. In delivery) Tol: 0/-0,2
d ₁	118 mm	Rib diameter inner ring
d ₂	128 mm	Sealing diameter (rib)
d ₃	162 mm	Outside diameter of snap ring WRE
d _{1 min}	118 mm	Minimum diameter shaft shoulder
	30 °	Chamfer angle
	-0,2 mm	Lower distance snap ring tolerance
	-0,2 mm	Lower distance retaining ring tolerance
	0 mm	Upper distance snap ring tolerance
	0 mm	Upper distance retaining ring tolerance
	0 mm	Lower distance ring groove tolerance
	0,2 mm	Upper distance ring groove tolerance

Dimensions

C	66 mm	Width, outer ring
C ₁	59,2 mm	Distance ring grooves
D ₁	147 mm	Diameter of groove
m	4,2 mm	Width of groove
r _{min}	0,6 mm	Minimum chamfer dimension
t	1,5 mm	Chamfer width
X	54 mm	Distance between rolling elements

Temperature range

T _{min}	-30 °C	Operating temperature min.
T _{max}	120 °C	Operating temperature max.