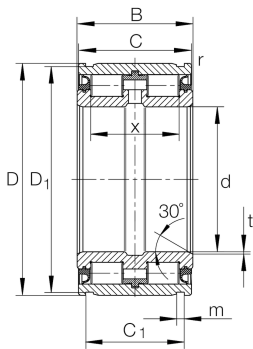


**SL045030-D**

Cylindrical roller bearing

Cylindrical roller bearing SL04.-D, full complement roller set, two-row, locating bearing, central rib on outer ring, 3 ribs on inner ring, type SL04

Technical information

**Your current product variant**

Design	D	New outer Contour
Radial internal clearance	CN (Group N)	Normal internal clearance
Tolerance class	PN	Normal (ISO 492:2023)
Number of rows	2	Double-row design

Main Dimensions & Performance Data

d	150 mm	Bore diameter
D	225 mm	Outside diameter
B	100 mm	Width
C_r	710.000 N	Basic dynamic load rating, radial
C_{0r}	1.260.000 N	Basic static load rating, radial
C_{ur}	166.000 N	Fatigue load limit, radial
n_G Grease	850 1/min	Limiting speed for grease lubrication
$\approx m$	12,715 kg	Weight



Mounting dimensions

C _{a1}	81 mm	Mounting dim for snap ring WRE (not included in delivery) Tolerance: 0/-0,2
C _{a2}	77 mm	Mounting dim for retaining ring to DIN 471 (not incl. In delivery) Tol: 0/-0,2
d ₁	176 mm	Rib diameter inner ring
d ₂	192 mm	Sealing diameter (rib)
d ₃	245 mm	Outside diameter of snap ring WRE
d _{1 min}	176 mm	Minimum diameter shaft shoulder
	30 °	Chamfer angle
	-0,2 mm	Lower distance snap ring tolerance
	-0,2 mm	Lower distance retaining ring tolerance
	0 mm	Upper distance snap ring tolerance
	0 mm	Upper distance retaining ring tolerance
	0 mm	Lower distance ring groove tolerance
	0,2 mm	Upper distance ring groove tolerance

Dimensions

C	99 mm	Width, outer ring
C ₁	87,2 mm	Distance ring grooves
D ₁	221 mm	Diameter of groove
m	5,2 mm	Width of groove
r _{min}	0,6 mm	Minimum chamfer dimension
t	2 mm	Chamfer width
X	80 mm	Distance between rolling elements

Temperature range

T _{min}	-30 °C	Operating temperature min.
T _{max}	120 °C	Operating temperature max.