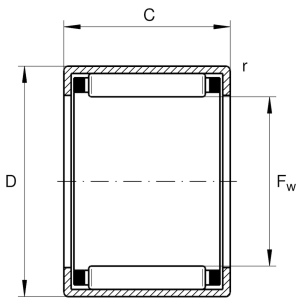


**HK0609-B-L294** [↗](#)

Drawn cup needle roller bearing open end

Drawn cup needle roller bearings with open ends HK, to DIN 618/ISO 3245

Technical information



Your current product variant

| | | |
|------------------|---------|---------------------------------|
| Lubricant | L294 | Grease (L294/customer specific) |
| Lubrication hole | Without | |
| Coating | Without | |
| Sealing | Without | |

Main Dimensions & Performance Data

| | | |
|-----------------|--------------|---------------------------------------|
| F_w | 6 mm | Under roller diameter |
| D | 10 mm | Outside diameter |
| C | 9 mm | Width |
| C_r | 2.850 N | Basic dynamic load rating, radial |
| C_{0r} | 2.600 N | Basic static load rating, radial |
| C_{ur} | 320 N | Fatigue load limit, radial |
| n_G | 36.500 1/min | Limiting speed |
| $n_{G, Grease}$ | 21.900 1/min | Limiting speed for grease lubrication |
| n_{gr} | 30.500 1/min | Reference speed |
| $\approx m$ | 2,24 g | Weight |

Dimensions

| | | |
|-----------|--------|---------------------------|
| C_1 | 9 mm | Width, outer ring |
| r_{min} | 0,4 mm | Minimum chamfer dimension |



Temperature range

| | | |
|-----------|--------|----------------------------|
| T_{min} | -30 °C | Operating temperature min. |
| T_{max} | 140 °C | Operating temperature max. |

Additional information

| | |
|----------|--------------|
| GR6X10X2 | Sealing ring |
|----------|--------------|

Characteristics

-  Radial load
-  Grease Lubrication
-  Oil Lubrication
-  Not sealed
-  Small design envelope