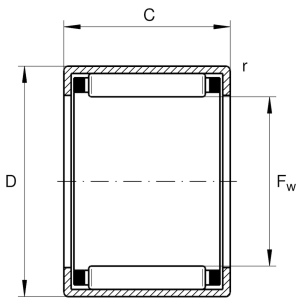


**HK2516**

Drawn cup needle roller bearing open end

Drawn cup needle roller bearings with open ends HK, to DIN 618/ISO 3245

Technical information



Your current product variant

Lubricant	Without
Lubrication hole	Without
Coating	Without
Type of Sealing	Without

Main Dimensions & Performance Data

F_w	25 mm	Under roller diameter
D	32 mm	Outside diameter
C	16 mm	Width
C_r	15.600 N	Basic dynamic load rating, radial
C_{0r}	24.000 N	Basic static load rating, radial
C_{ur}	3.200 N	Fatigue load limit, radial
n_G	10.200 1/min	Limiting speed
n_G Grease	6.100 1/min	Limiting speed for grease lubrication
n_{gr}	7.500 1/min	Reference speed
$\approx m$	25,83 g	Weight

Dimensions

C_1	16 mm	Width, outer ring
r_{min}	0,8 mm	Minimum chamfer dimension







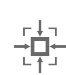
Temperature range

T_{min}	-30 °C	Operating temperature min.
T_{max}	140 °C	Operating temperature max.

Additional information

SD25X32X4	Sealing ring
G25X32X4	Sealing ring 2
LR20X25X16,5	Suitable inner rings LR
IR20X25X17-XL	Suitable inner rings IR

Characteristics

-  Radial load
-  Grease Lubrication
-  Oil Lubrication
-  Not sealed
-  Small design envelope