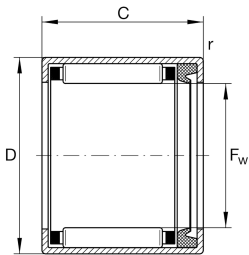
**HK1414-RS**

Drawn cup needle roller bearing open end

Drawn cup needle roller bearings with open ends HK..-RS, lip seal on one side, to DIN 618

Technical information

**Your current product variant**

Lubricant	L271	Grease (L271/standart specific)
Lubrication hole	Without	
Coating	Without	
Type of Seal	RS	Contact seal on one sides

Main Dimensions & Performance Data

F_w	14 mm	Under roller diameter
D	20 mm	Outside diameter
C	14 mm	Width
C_r	7.100 N	Basic dynamic load rating, radial
C_{0r}	8.500 N	Basic static load rating, radial
C_{ur}	1.030 N	Fatigue load limit, radial
n_G	10.500 1/min	Limiting speed
n_G Grease	10.500 1/min	Limiting speed for grease lubrication
m	11,384 g	Weight

Dimensions



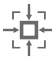
r_{min}	0,8 mm	Minimum chamfer dimension
-----------	--------	---------------------------

Temperature range

T_{min}	-20 °C	Operating temperature min.
T_{max}	100 °C	Operating temperature max.



Characteristics

-  Radial load
-  Grease Lubrication
-  Sealed on one side
-  Small design envelope