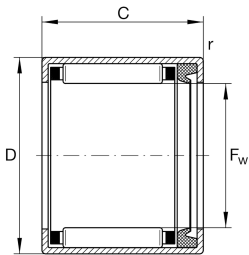


**HK2018-RS**

Drawn cup needle roller bearing open end

Drawn cup needle roller bearings with open ends HK..-RS, lip seal on one side, to DIN 618

Technical information

**Your current product variant**

Lubricant	L271	Grease (L271/standart specific)
Lubrication hole	Without	
Coating	Without	
Type of Seal	RS	Contact seal on one sides

Main Dimensions & Performance Data

F_w	20 mm	Under roller diameter
D	26 mm	Outside diameter
C	18 mm	Width
C_r	12.700 N	Basic dynamic load rating, radial
C_{0r}	20.100 N	Basic static load rating, radial
C_{ur}	2.550 N	Fatigue load limit, radial
n_G	7.600 1/min	Limiting speed
n_G Grease	7.600 1/min	Limiting speed for grease lubrication
m	21,14 g	Weight

Dimensions

r_{min}	0,8 mm	Minimum chamfer dimension
-----------	--------	---------------------------

Temperature range

T_{min}	-20 °C	Operating temperature min.
T_{max}	100 °C	Operating temperature max.



Additional information

LR17X20X20,5

Suitable inner rings LR

IR17X20X20-XL

Suitable inner rings IR

Characteristics



Radial load



Grease Lubrication



Sealed on one side



Small design envelope