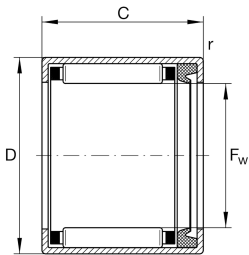


**HK2214-RS**

Drawn cup needle roller bearing open end

Drawn cup needle roller bearings with open ends HK..-RS, lip seal on one side, to DIN 618

Technical information

**Your current product variant**

| | | |
|------------------|---------|---------------------------------|
| Lubricant | L271 | Grease (L271/standart specific) |
| Lubrication hole | Without | |
| Coating | Without | |
| Sealing | RS | Contact seal on one sides |

Main Dimensions & Performance Data

| | | |
|-----------------|-------------|---------------------------------------|
| F_w | 22 mm | Under roller diameter |
| D | 28 mm | Outside diameter |
| C | 14 mm | Width |
| C_r | 9.100 N | Basic dynamic load rating, radial |
| C_{0r} | 13.400 N | Basic static load rating, radial |
| C_{ur} | 1.630 N | Fatigue load limit, radial |
| n_G | 7.000 1/min | Limiting speed |
| n_G Grease | 7.000 1/min | Limiting speed for grease lubrication |
| m | 16,7 g | Weight |

Dimensions

| | | |
|-----------|--------|---------------------------|
| r_{min} | 0,8 mm | Minimum chamfer dimension |
|-----------|--------|---------------------------|

Temperature range

| | | |
|-----------|--------|----------------------------|
| T_{min} | -20 °C | Operating temperature min. |
| T_{max} | 100 °C | Operating temperature max. |



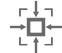


Additional information

IR17X22X16-XL

Suitable inner rings IR

Characteristics

-  Radial load
-  Grease Lubrication
-  Sealed on one side
-  Small design envelope