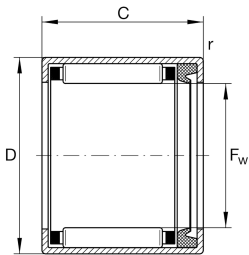


**HK3018-RS**

Drawn cup needle roller bearing open end

Drawn cup needle roller bearings with open ends HK..-RS, lip seal on one side, to DIN 618

Technical information

**Your current product variant**

Lubricant	L271	Grease (L271/standart specific)
Lubrication hole	Without	
Coating	Without	
Type of Seal	RS	Contact seal on one sides

Main Dimensions & Performance Data

F_w	30 mm	Under roller diameter
D	37 mm	Outside diameter
C	18 mm	Width
C_r	17.200 N	Basic dynamic load rating, radial
C_{0r}	29.000 N	Basic static load rating, radial
C_{ur}	3.850 N	Fatigue load limit, radial
n_G	5.200 1/min	Limiting speed
n_G Grease	5.200 1/min	Limiting speed for grease lubrication
m	34,01 g	Weight

Dimensions

r_{min}	0,8 mm	Minimum chamfer dimension
-----------	--------	---------------------------

Temperature range




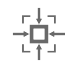
T_{min}	-20 °C	Operating temperature min.
T_{max}	100 °C	Operating temperature max.



Additional information

LR25X30X20,5	Suitable inner rings LR
IR25X30X20-XL	Suitable inner rings IR

Characteristics

-  Radial load
-  Grease Lubrication
-  Sealed on one side
-  Small design envelope