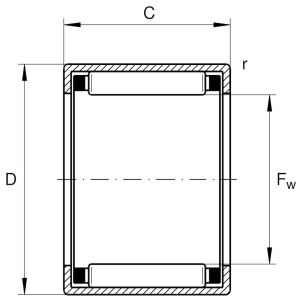


**HK2220-AS1-B**

Drawn cup needle roller bearing open end

Drawn cup needle roller bearing open end  
HK...AS1-B, single row, with cage

## Technical information



## Your current product variant

Lubricant	Without	
Lubrication hole	AS1	With (1)
Coating	Without	
Sealing	Without	

## Main Dimensions &amp; Performance Data

$F_w$	22 mm	Under roller diameter
D	28 mm	Outside diameter
C	20 mm	Width
$C_r$	16.500 N	Basic dynamic load rating, radial
$C_{0r}$	29.000 N	Basic static load rating, radial
$C_{ur}$	3.950 N	Fatigue load limit, radial
$n_G$	11.700 1/min	Limiting speed
$n_G$ Grease	7.000 1/min	Limiting speed for grease lubrication
$n_{gr}$	8.500 1/min	Reference speed
$\approx m$	25,481 g	Weight

## Dimensions

$C_1$	20 mm	Width, outer ring
$r_{min}$	0,8 mm	Minimum chamfer dimension






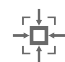
### Temperature range

$T_{min}$	-30 °C	Operating temperature min.
$T_{max}$	140 °C	Operating temperature max.

### Additional information

SD22X28X4	Sealing ring
G22X28X4	Sealing ring 2
IR17X22X23-XL	Suitable inner rings IR

### Characteristics

-  Radial load
-  Grease Lubrication
-  Oil Lubrication
-  Small design envelope