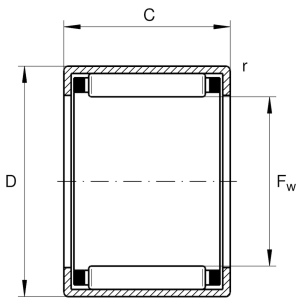


**HK3022**

Drawn cup needle roller bearing open end

Drawn cup needle roller bearings with open ends HK, to DIN 618/ISO 3245

Technical information

**Your current product variant**

Coating	Without
Type of Seal	Without

Main Dimensions & Performance Data

F_w	30 mm	Under roller diameter
D	37 mm	Outside diameter
C	22 mm	Width
C_r	24.800 N	Basic dynamic load rating, radial
C_{0r}	46.000 N	Basic static load rating, radial
C_{ur}	6.200 N	Fatigue load limit, radial
n_G	8.600 1/min	Limiting speed
n_G Grease	5.200 1/min	Limiting speed for grease lubrication
n_{gr}	6.200 1/min	Reference speed
$\approx m$	44 g	Weight

Dimensions

C_1	22 mm	Width, outer ring
r_{min}	0,8 mm	Minimum chamfer dimension

Temperature range

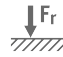



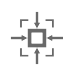
T_{min}	-30 °C	Operating temperature min.
T_{max}	140 °C	Operating temperature max.



Additional information

SD30X37X4	Sealing ring
G30X37X4	Sealing ring 2

Characteristics

-  Radial load
-  Grease Lubrication
-  Oil Lubrication
-  Not sealed
-  Small design envelope