

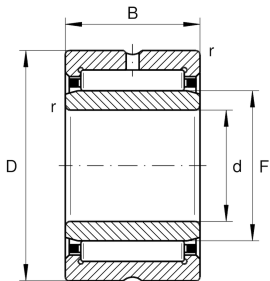
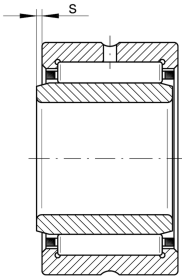
**NKI28/20-TV-XL**

Needle roller bearing

Needle roller bearings NKI, light series

**X-life**

## Technical information

**Your current product variant**

Cage	TV	Plastic Cage made from PA66
Radial internal clearance	CN (Group N)	Normal internal clearance
Coating	Without	

**Main Dimensions & Performance Data**

d	28 mm	Bore diameter
D	42 mm	Outside diameter
B	20 mm	Width
$C_r$	29.500 N	Basic dynamic load rating, radial
$C_{0r}$	44.500 N	Basic static load rating, radial
$C_{ur}$	8.000 N	Fatigue load limit, radial
$n_G$	14.000 1/min	Limiting speed
$n_{gr}$	7.500 1/min	Reference speed
$m$	91,58 g	Weight

**Dimensions**

F	32 mm	Raceway diameter inner ring
$r_{min}$	0,3 mm	Minimum chamfer dimension
s	1 mm	Axial displacement



### Temperature range

---

$T_{\min}$	-30 °C	Operating temperature min.
$T_{\max}$	120 °C	Operating temperature max.

### Characteristics

---

-  Radial load
-  Grease Lubrication
-  Oil Lubrication
-  Not sealed
-  Small design envelope