

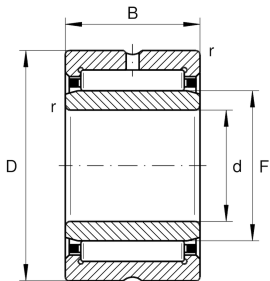
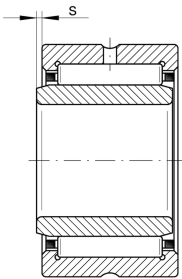
**NKI30/20-TV-XL** [↗](#)

Needle roller bearing

Needle roller bearings NKI, light series

**X-life**

## Technical information

**Your current product variant**

Cage	TV	Plastic Cage made from PA66
Radial internal clearance	CN (Group N)	Normal internal clearance
Coating	Without	

**Main Dimensions & Performance Data**

d	30 mm	Bore diameter
D	45 mm	Outside diameter
B	20 mm	Width
$C_r$	31.000 N	Basic dynamic load rating, radial
$C_{0r}$	48.500 N	Basic static load rating, radial
$C_{ur}$	8.600 N	Fatigue load limit, radial
$n_G$	12.900 1/min	Limiting speed
$n_{gr}$	6.800 1/min	Reference speed
$m$	106,53 g	Weight

**Dimensions**

F	35 mm	Raceway diameter inner ring
$r_{min}$	0,3 mm	Minimum chamfer dimension
s	0,5 mm	Axial displacement



### Temperature range

---

$T_{\min}$  -30 °C Operating temperature min.

$T_{\max}$  120 °C Operating temperature max.

### Characteristics

---



Radial load



Grease Lubrication



Oil Lubrication



Not sealed



Small design envelope