

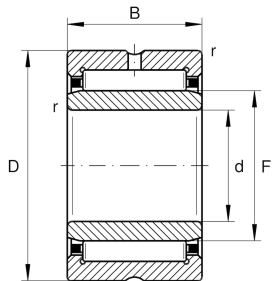
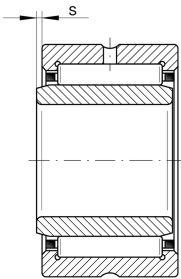
**NKI45/35-TV-IS1-XL** [↗](#)

Needle roller bearing

Needle roller bearings NKI, light series

X-life

Technical information



Your current product variant

Cage	TV	Plastic Cage made from PA66
Radial internal clearance	CN (Group N)	Normal internal clearance
Tolerance class	PN	Normal (PN)
Lubrication hole	IS1	IS1
Coating	Without	
Lubricant	Without	

Main Dimensions & Performance Data

d	45 mm	Bore diameter
D	62 mm	Outside diameter
B	35 mm	Width
C_r	67.000 N	Basic dynamic load rating, radial
C_{0r}	132.000 N	Basic static load rating, radial
C_{ur}	24.300 N	Fatigue load limit, radial
n_G	9.200 1/min	Limiting speed
n_{gr}	4.950 1/min	Reference speed
m	307 g	Weight



Dimensions

F	50 mm	Raceway diameter inner ring
r _{min}	0,6 mm	Minimum chamfer dimension
s	2 mm	Axial displacement

Temperature range

T _{min}	-30 °C	Operating temperature min.
T _{max}	120 °C	Operating temperature max.

Characteristics

-  Radial load
-  Grease Lubrication
-  Oil Lubrication
-  Not sealed
-  Small design envelope