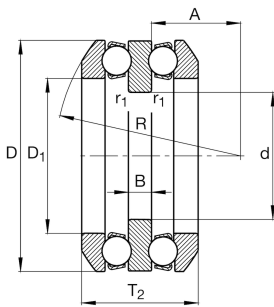


**FAG****54238-MP**

Axial deep groove ball bearing

Axial deep groove ball bearing 542...-MP, double direction, with spherical housing washer, solid brass cage

Technical information



Your current product variant

Cage	MP	Solid brass cage, rolling element guided
Tolerance class	PN	Tolerance class PN, acc. to DIN 620
Dimensional / heat stabilization	S1	Rings dimensional stabilized up to 200°

Main Dimensions & Performance Data

d	160 mm	Inner diameter shaft washer
D	270 mm	Outer diameter housing washer
T ₂	116,4 mm	Height
C _a	335.000 N	Basic dynamic load rating, axial
C _{0a}	1.170.000 N	Basic static load rating, axial
C _{ua}	35.500 N	Fatigue load limit, axial
n _G	1.540 1/min	Limiting speed
n _{gr}	1.990 1/min	Reference speed
≈m	21,295 kg	Weight

Mounting dimensions

d _{a max}	190 mm	Maximum diameter shaft shoulder
D _{a max}	230 mm	Maximum diameter of housing shoulder
r _{a max}	2 mm	Maximum filled radius
r _{a1 max}	2 mm	Maximum filled radius



Dimensions

D ₁	194,7 mm	Inner diameter housing washer
B	24 mm	Height shaft washer
r _{min}	2 mm	Minimum chamfer dimension
r _{1 min}	2 mm	Minimum chamfer dimension
R	200 mm	Radius spherical housing washer
A	93,5 mm	Distance of the center point
T ₃	131 mm	Height with seat washer
D ₂	230 mm	Bore diameter seat washer
D ₃	280 mm	Outside diameter seat washer
C	23 mm	Height seat washer

Temperature range

T _{min}	-30 °C	Operating temperature min.
T _{max}	200 °C	Operating temperature max.

Calculation factors

A	7,2	Minimum load factor
---	-----	---------------------

Additional information

U238	Seat washer
------	-------------

Characteristics

	Axial load in one direction
	Axial load in two directions
	Grease Lubrication
	Oil Lubrication
	Not sealed
	Static angular error and misalignment