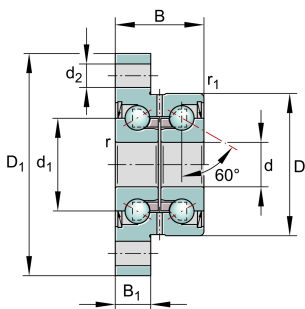
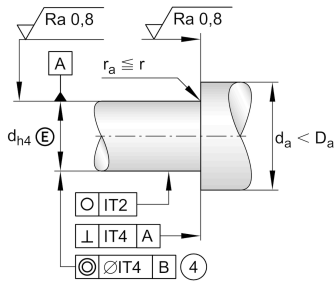
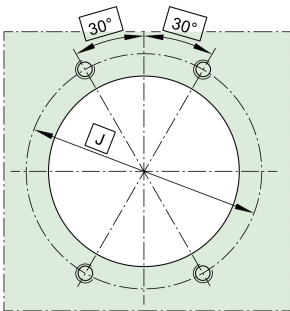


**ZKLFA1563-2RS**

Axial angular contact ball bearing

Angular contact ball bearing units
ZKLFA..-2RS, double direction, for screw
mounting, lip seals on both sides, with
flattened flange

Technical information

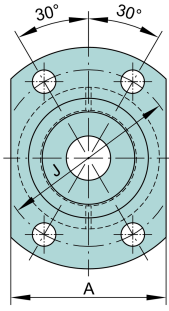


Your current product variant

Type of Sealing	2RS	Contact lip seal on both sides
-----------------	-----	--------------------------------

Main Dimensions & Performance Data

d	15 mm	Bore diameter
	0 mm	Bore diameter upper tolerance
	-0,005 mm	Bore diameter lower tolerance
D	42 mm	Outside diameter
	0 mm	Outside diameter upper tolerance
	-0,01 mm	Outside diameter lower tolerance
B	25 mm	Width
	0 mm	Width upper tolerance
	-0,25 mm	Width lower tolerance
C _a	18.000 N	Basic dynamic load rating, axial
C _{0a}	28.500 N	Basic static load rating, axial
C _{ua}	1.300 N	Fatigue load limit, axial
n _G Grease	8.200 1/min	Limiting speed for grease lubrication
n _g	3.500 1/min	Thermally permissible speed
m	0,259 kg	Weight



Mounting dimensions

$d_{a \min}$	20 mm	Minimum diameter shaft shoulder
$d_{a \max}$	34 mm	Maximum diameter of shaft shoulder
t_1	0,1 mm	Position tolerance
	M6	Screw size

n_a	4	Number of screws
-------	---	------------------

Dimensions

d_1	28 mm	Rib diameter inner ring
-------	-------	-------------------------

r_{\min}	0,3 mm	Minimum chamfer dimension
------------	--------	---------------------------

$r_{1 \min}$	0,6 mm	Minimum chamfer dimension
--------------	--------	---------------------------

B_1	10 mm	Thickness of flange
-------	-------	---------------------

d_2	6,8 mm	Fixing boring diameter
-------	--------	------------------------

J	53 mm	Pitch circle diameter (holes)
---	-------	-------------------------------

A	45 mm	Flange width
---	-------	--------------

Temperature range

T_{\min}	-30 °C	Operating temperature min.
------------	--------	----------------------------







T_{\max}	120 °C	Operating temperature max.
------------	--------	----------------------------



Additional information

M_{RL}	0,2 Nm	Bearing friction torque
c_{aL}	400 N/ μ m	Rigidity axial
c_{kL}	65 Nm/mrad	Tilting stiffness
M_m	0,102 kg \cdot cm ²	Mass moment of inertia
	2 μ m	Axial runout
	ZM15	Recommended INA precision locknut for radial locking (not included)
	AM15	Recommended INA precision locknut for axial locking (not included)
M_A	10 Nm	Tightening torque nut
	5.484 N	Locknut force axial

Characteristics

-  F_r Radial load
-  F_a Axial load in one direction
-  F_a Axial load in two directions
-  L_h Lifetime lubrication, freedom from maintenance
-  Grease Lubrication
-  Sealed on both sides