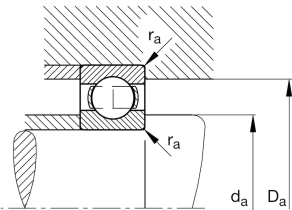
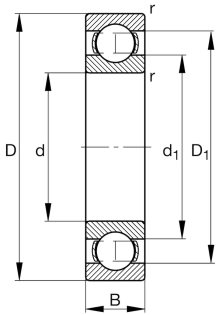


**FAG****S6205>N**

## Deep groove ball bearing

Deep groove ball bearing S62, corrosion-resistant materials, single row, steel sheet metal cage

## Technical information



## Your current product variant

Version code	>N	Not marked on bearing
Material Bearing	S	Stainless steel
Sealing	Without	Not sealed
Cage	JN	Steel sheet metal
Tolerance class	PN	Normal (ISO 492:2023)
Dimensional / heat stabilization	SN	Rings dimensional stabilized up to 120°
Lubricant	Without	Bearing not greased
Radial internal clearance	CN (Group N)	Normal internal clearance
Bore type	Z	Cylindrical

## Main Dimensions &amp; Performance Data

d	25 mm	Bore diameter
D	52 mm	Outside diameter
B	15 mm	Width
C <sub>r</sub>	14.900 N	Basic dynamic load rating, radial
C <sub>0r</sub>	7.900 N	Basic static load rating, radial
C <sub>ur</sub>	485 N	Fatigue load limit, radial
n <sub>G</sub>	19.400 1/min	Limiting speed
n <sub>gr</sub>	14.100 1/min	Reference speed
m	129 g	Weight



### Mounting dimensions

$d_{a \min}$	30,6 mm	Minimum diameter shaft shoulder
$D_{a \max}$	46,4 mm	Maximum diameter of housing shoulder
$r_{a \max}$	1 mm	Maximum fillet radius

### Dimensions

$r_{\min}$	1 mm	Minimum chamfer dimension
$D_1$	44,2 mm	Shoulder diameter outer ring
$D_2$	46,4 mm	Caliber diameter outer ring
$d_1$	33,8 mm	Shoulder diameter inner ring


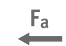





### Temperature range

$T_{\min}$	-30 °C	Operating temperature min.
$T_{\max}$	120 °C	Operating temperature max.

### Calculation factors

$f_0$	13,9	Calculation factor
-------	------	--------------------

### Characteristics

	Radial load
	Axial load in one direction
	Axial load in two directions
	Grease Lubrication
	Oil Lubrication
	Not sealed
	Protected against rust