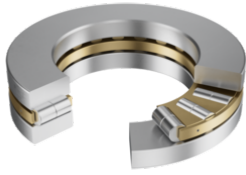


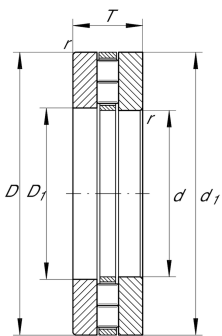
**89326-M**

Axial cylindrical roller bearing

Axial cylindrical roller bearing 893..-M, two-row



Technical information



Your current product variant

Cage	M	Brass Cage
------	---	------------

Main Dimensions & Performance Data

d	130 mm	Bore diameter
D	225 mm	Outside diameter
T	58 mm	Height
C_a	720.000 N	Basic dynamic load rating, axial
C_{0a}	2.700.000 N	Basic static load rating, axial
C_{ua}	255.000 N	Fatigue load limit, axial
n_G	1.620 1/min	Limiting speed
n_{gr}	650 1/min	Reference speed
m	10,76 kg	Weight

Dimensions

D_1	134 mm	Bore diameter housing washer
d_1	225 mm	Rip diameter shaft washer
r_{min}	2,1 mm	Minimum chamfer dimension

Temperature range

T_{min}	-20 °C	Operating temperature min.
T_{max}	120 °C	Operating temperature max.



Additional information

K89326-M	Axial roller and cage assembly
GS89326	Housing Washer
WS89326	Shaft washer

Characteristics

 Axial load in one direction

 Grease Lubrication

 Oil Lubrication

 Not sealed