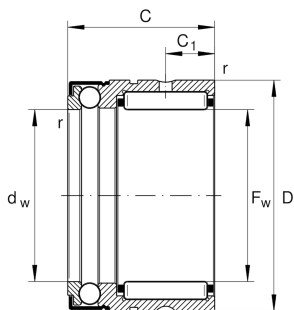
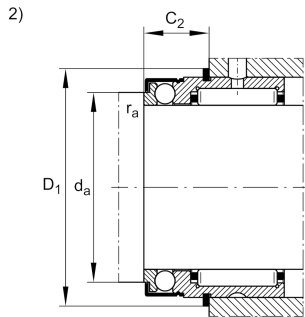
**NX20-Z-XL**

## Needle roller/axial ball bearing

Needle roller/axial ball bearings NX...-Z,  
single direction axial component, for grease  
lubrication

X-life

## Technical information



## Your current product variant

Sealing	Z	Bearing with end cap
Cage	Standard	

## Main Dimensions &amp; Performance Data

$F_w$	20 mm	Bore diameter
D	30 mm	Outside diameter
C	28 mm	Height
$C_r$	14.600 N	Basic dynamic load rating, radial
$C_{0r}$	17.500 N	Basic static load rating, radial
$C_a$	7.000 N	Basic dynamic load rating, axial
$C_{0a}$	14.700 N	Basic static load rating, axial
$C_{ur}$	3.300 N	Fatigue load limit, radial
$C_{ua}$	670 N	Fatigue load limit, axial
$n_G$	6.500 1/min	Limiting speed
$\approx m$	67,17 g	Weight



### Mounting dimensions

$d_a$	25 mm	Mounting dimension shaft shoulder
$r_{a \max}$	0,3 mm	Maximum recess radius
$D_1$	33,6 mm	Connection diameter snap ring
$C_2$	12,2 mm	Connection width with snap ring

### Dimensions

$C_1$	8 mm	Distance to lubrication hole
$C_2$	8 mm	Distance to lubrication hole
$d_w$	20 mm	Bore diameter of shaft washer
$r_{\min}$	0,3 mm	Minimum chamfer dimension


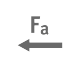


### Temperature range

$T_{\min}$	-30 °C	Operating temperature min.
$T_{\max}$	120 °C	Operating temperature max.

### Additional information

IR17X20X16-XL	Suitable inner rings IR
WR30, SW30	Snap ring

### Characteristics

	Radial load
	Axial load in one direction
	Grease Lubrication
	Sealed on one side