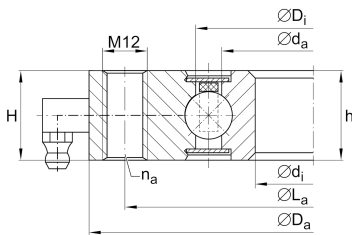


**VU130225** [↗](#)

Slewing ring, 4 point contact bearing, without gear teeth

Four point contact bearings without gear teeth, sealed on both sides

Technical information

**Main Dimensions & Performance Data**

| | | |
|-------------|---------|---|
| d_i | 200 mm | Inner diameter inner ring |
| | 0 mm | Inner diameter inner ring lower tolerance |
| | 0,03 mm | Inner diameter inner ring upper tolerance |
| H | 24 mm | Height |
| D_a | 290 mm | Outside Diameter |
| h_a | 24 mm | Width outer ring |
| h_i | 24 mm | Width inner ring |
| | 0,02 mm | Normal radial clearance min. |
| | 0,06 mm | Normal radial clearance max. |
| | 0,05 mm | Normal axial clearance min. |
| | 0,16 mm | Normal axial clearance max. |
| $\approx m$ | 5,46 kg | Weight |

Dimensions

| | | |
|--------------------|----------|---|
| D_i | 237,6 mm | Inner diameter outer ring |
| d_a | 213 mm | Outside diameter inner ring |
| | M12 | Tread fixing bore |
| L_a | 270 mm | Pitchcircle diameter fixing holes outer ring |
| n_a | 6 | Number of fixing holes in outer ring |
| $F_{r\text{ zul}}$ | 19.800 N | Max. radial load fixing screws (friction locking) |



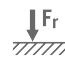





Temperature range

| | | |
|-----------|--------|----------------------------|
| T_{min} | -25 °C | Operating temperature min. |
| T_{max} | 80 °C | Operating temperature max. |

Calculation factors

| | | |
|----------|-----------|--|
| C_a | 48.000 N | Basic dynamic load rating, axial |
| C_{0a} | 203.000 N | Basic static load rating, axial |
| C_r | 43.500 N | Basic dynamic load rating, radial (for radial load only) |
| C_{0r} | 93.000 N | Basic static load rating, radial (for radial load only) |

Characteristics

-  Radial load
-  Axial load in one direction
-  Axial load in two directions
-  Moments about all axes
-  Grease Lubrication
-  Sealed on both sides