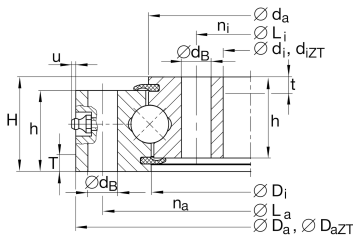


**VU140179** [↗](#)

Slewing ring, 4 point contact bearing, without gear teeth

Four point contact bearings without gear teeth, sealed on both sides

## Technical information

**Main Dimensions & Performance Data**

$d_i$	124,5 mm	Inner diameter inner ring
H	35 mm	Height
$D_a$	234 mm	Outside Diameter
$h_a$	30 mm	Width outer ring
$h_i$	30 mm	Width inner ring
	0,04 mm	Normal radial clearance min.
	0,14 mm	Normal radial clearance max.
	0,07 mm	Normal axial clearance min.
	0,23 mm	Normal axial clearance max.
$\approx m$	6,3 kg	Weight



## Dimensions

$D_i$	178 mm	Inner diameter outer ring
$d_a$	180 mm	Outside diameter inner ring
$d_B$	11 mm	Fixing bore
$L_a$	214 mm	Pitchcircle diameter fixing holes outer ring
$n_a$	12	Number of fixing holes in outer ring
$L_i$	144,5 mm	Pitchcircle diameter fixing holes inner ring
$n_i$	12	Number of fixing holes in inner ring
$F_{r\text{ zul}}$	33.600 N	Max. radial load fixing screws (friction locking)
$u_{\text{ max}}$	3 mm	Max. protrusion lubrication nipple


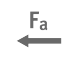
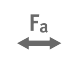



## Temperature range

$T_{\text{ min}}$	-25 °C	Operating temperature min.
$T_{\text{ max}}$	80 °C	Operating temperature max.

## Calculation factors

$C_a$	91.000 N	Basic dynamic load rating, axial
$C_{0a}$	370.000 N	Basic static load rating, axial
$C_r$	82.000 N	Basic dynamic load rating, radial (for radial load only)
$C_{0r}$	169.000 N	Basic static load rating, radial (for radial load only)

## Characteristics

	Radial load
	Axial load in one direction
	Axial load in two directions
	Moments about all axes
	Grease Lubrication
	Sealed on both sides