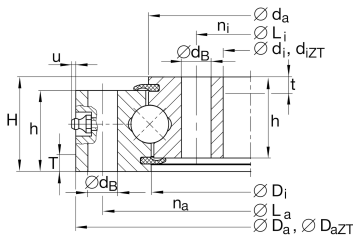
**VU140325** [↗](#)

Slewing ring, 4 point contact bearing, without gear teeth

Four point contact bearings without gear teeth, sealed on both sides

Technical information

**Main Dimensions & Performance Data**

d_i	270 mm	Inner diameter inner ring
	0,5 mm	Inner diameter inner ring lower tolerance
	0,5 mm	Inner diameter inner ring upper tolerance
H	35 mm	Height
D_a	380 mm	Outside Diameter
	0,5 mm	Outside diameter lower tolerance
	0,5 mm	Outside diameter upper tolerance
h_a	30 mm	Width outer ring
h_i	30 mm	Width inner ring
	0,04 mm	Normal radial clearance min.
	0,14 mm	Normal radial clearance max.
	0,07 mm	Normal axial clearance min.
	0,23 mm	Normal axial clearance max.
$\approx m$	11,325 kg	Weight



Dimensions

D_i	324 mm	Inner diameter outer ring
d_a	326 mm	Outside diameter inner ring
d_B	11 mm	Fixing bore
L_a	360 mm	Pitchcircle diameter fixing holes outer ring
n_a	24	Number of fixing holes in outer ring
L_i	290 mm	Pitchcircle diameter fixing holes inner ring
n_i	24	Number of fixing holes in inner ring
$F_{r\text{zul}}$	67.200 N	Max. radial load fixing screws (friction locking)
u_{max}	3 mm	Max. protrusion lubrication nipple

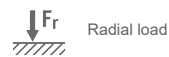
Temperature range

T_{min}	-25 °C	Operating temperature min.
T_{max}	80 °C	Operating temperature max.

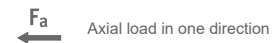
Calculation factors

C_a	115.000 N	Basic dynamic load rating, axial
C_{0a}	670.000 N	Basic static load rating, axial
C_r	104.000 N	Basic dynamic load rating, radial (for radial load only)
C_{0r}	310.000 N	Basic static load rating, radial (for radial load only)

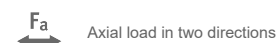
Characteristics



Radial load



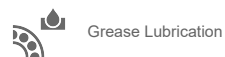
Axial load in one direction



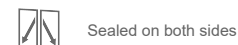
Axial load in two directions



Moments about all axes



Grease Lubrication



Sealed on both sides



Large bearing