

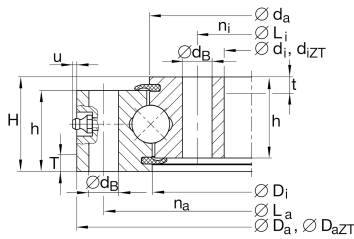


### VU140325-ZT-RR

Slewing ring, 4 point contact bearing, without gear teeth

Four point contact bearings without gear teeth, sealed on both sides

## Technical information



### Your current product variant

Centering	ZT	Centering on inner and outer ring
Coating	RR	Protected against corrosion by Corrotect special coating



### Main Dimensions & Performance Data

$d_i$	270 mm	Inner diameter inner ring
	0,5 mm	Inner diameter inner ring lower tolerance
	0,5 mm	Inner diameter inner ring upper tolerance
$d_{iZT}$	272 mm	Diameter centring inner ring
	IT8	Diameter centring inner ring tolerance
H	35 mm	Height
$D_a$	380 mm	Outside Diameter
	0,5 mm	Outside diameter lower tolerance
	0,5 mm	Outside diameter upper tolerance
$D_{aZT}$	378 mm	Centring diameter outer ring
	-IT8	Diameter centring outer ring tolerance
T	5 mm	Length centering outer ring
t	5 mm	Length centering inner ring
$h_a$	30 mm	Width outer ring
$h_i$	30 mm	Width inner ring
	0,04 mm	Normal radial clearance min.
	0,14 mm	Normal radial clearance max.
	0,07 mm	Normal axial clearance min.
	0,23 mm	Normal axial clearance max.
$\approx m$	11,231 kg	Weight



## Dimensions

$D_i$	324 mm	Inner diameter outer ring
$d_a$	326 mm	Outside diameter inner ring
$d_B$	11 mm	Fixing bore
$L_a$	360 mm	Pitchcircle diameter fixing holes outer ring
$n_a$	24	Number of fixing holes in outer ring
$L_i$	290 mm	Pitchcircle diameter fixing holes inner ring
$n_i$	24	Number of fixing holes in inner ring
$F_{r\text{zul}}$	67.200 N	Max. radial load fixing screws (friction locking)
$u_{\text{max}}$	3 mm	Max. protrusion lubrication nipple


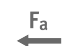




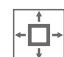
## Temperature range

$T_{\text{min}}$	-25 °C	Operating temperature min.
$T_{\text{max}}$	80 °C	Operating temperature max.

## Calculation factors

$C_a$	119.000 N	Basic dynamic load rating, axial
$C_{0a}$	700.000 N	Basic static load rating, axial
$C_r$	108.000 N	Basic dynamic load rating, radial (for radial load only)
$C_{0r}$	320.000 N	Basic static load rating, radial (for radial load only)

## Characteristics

	Radial load
	Axial load in one direction
	Axial load in two directions
	Moments about all axes
	Grease Lubrication
	Sealed on both sides
	Large bearing