

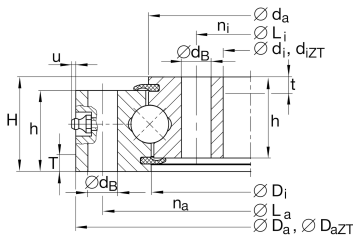


VU200260-RL0

Slewing ring, 4 point contact bearing, without gear teeth

Four point contact bearings without gear teeth, sealed on both sides

Technical information



Your current product variant

Radial internal clearance	RL0	Radial clearance 0 to 0,05; axial tilting clearance 0 to 0,08
---------------------------	-----	---

Main Dimensions & Performance Data

d_i	191 mm	Inner diameter inner ring
	0,5 mm	Inner diameter inner ring lower tolerance
	0,5 mm	Inner diameter inner ring upper tolerance
H	46 mm	Height
D_a	329 mm	Outside Diameter
	0,8 mm	Outside diameter lower tolerance
	0,8 mm	Outside diameter upper tolerance
h_a	41 mm	Width outer ring
h_i	41 mm	Width inner ring
$\approx m$	14,936 kg	Weight



Dimensions

D_i	259 mm	Inner diameter outer ring
d_a	261 mm	Outside diameter inner ring
d_B	14 mm	Fixing bore
L_a	305 mm	Pitchcircle diameter fixing holes outer ring
n_a	20	Number of fixing holes in outer ring
L_i	215 mm	Pitchcircle diameter fixing holes inner ring
n_i	20	Number of fixing holes in inner ring
$F_{r\text{ zul}}$	82.600 N	Max. radial load fixing screws (friction locking)
$u_{\text{ max}}$	2 mm	Max. protrusion lubrication nipple


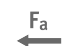




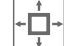
Temperature range

$T_{\text{ min}}$	-25 °C	Operating temperature min.
$T_{\text{ max}}$	80 °C	Operating temperature max.

Calculation factors

C_a	174.000 N	Basic dynamic load rating, axial
C_{0a}	620.000 N	Basic static load rating, axial
C_r	159.000 N	Basic dynamic load rating, radial (for radial load only)
C_{0r}	280.000 N	Basic static load rating, radial (for radial load only)

Characteristics

	Radial load
	Axial load in one direction
	Axial load in two directions
	Moments about all axes
	Grease Lubrication
	Sealed on both sides
	Large bearing