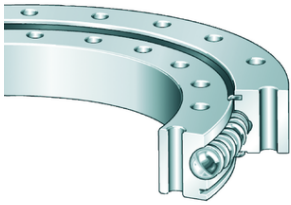




View product details on medias

27.04.2026, 23:11:25 UTC

SCHAEFFLER

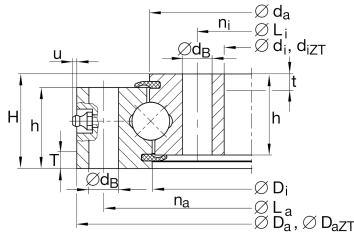


VU200260-ZT [↗](#)

Slewing ring, 4 point contact bearing, without gear teeth

Four point contact bearings without gear teeth, sealed on both sides

Technical information



Your current product variant

Centering	ZT	Centering on inner and outer ring
-----------	----	-----------------------------------

Main Dimensions & Performance Data

d _i	191 mm	Inner diameter inner ring
	0,5 mm	Inner diameter inner ring lower tolerance
	0,5 mm	Inner diameter inner ring upper tolerance
d _{iZT}	193 mm	Diameter centring inner ring
	IT8	Diameter centring inner ring tolerance
H	46 mm	Height
D _a	329 mm	Outside Diameter
	0,8 mm	Outside diameter lower tolerance
	0,8 mm	Outside diameter upper tolerance
D _{aZT}	327 mm	Centring diameter outer ring
	-IT8	Diameter centring outer ring tolerance
T	7 mm	Length centering outer ring
t	7 mm	Length centering inner ring
h _a	41 mm	Width outer ring
h _i	41 mm	Width inner ring
	0,05 mm	Normal radial clearance min.
	0,2 mm	Normal radial clearance max.
	0,08 mm	Normal axial clearance min.
	0,33 mm	Normal axial clearance max.
≈m	14,77 kg	Weight



Dimensions

D_i	259 mm	Inner diameter outer ring
d_a	261 mm	Outside diameter inner ring
d_B	14 mm	Fixing bore
L_a	305 mm	Pitchcircle diameter fixing holes outer ring
n_a	20	Number of fixing holes in outer ring
L_i	215 mm	Pitchcircle diameter fixing holes inner ring
n_i	20	Number of fixing holes in inner ring
$F_{r\text{ zul}}$	89.000 N	Max. radial load fixing screws (friction locking)
$u_{\text{ max}}$	2 mm	Max. protrusion lubrication nipple


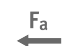




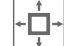
Temperature range

$T_{\text{ min}}$	-25 °C	Operating temperature min.
$T_{\text{ max}}$	80 °C	Operating temperature max.

Calculation factors

C_a	179.000 N	Basic dynamic load rating, axial
C_{0a}	650.000 N	Basic static load rating, axial
C_r	163.000 N	Basic dynamic load rating, radial (for radial load only)
C_{0r}	300.000 N	Basic static load rating, radial (for radial load only)

Characteristics

	Radial load
	Axial load in one direction
	Axial load in two directions
	Moments about all axes
	Grease Lubrication
	Sealed on both sides
	Large bearing