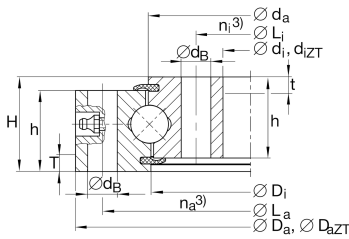


**VU250433** [↗](#)

Slewing ring, 4 point contact bearing, without gear teeth

Four point contact bearings without gear teeth, sealed on both sides

Technical information

**Main Dimensions & Performance Data**

d_i	344 mm	Inner diameter inner ring
	0,5 mm	Inner diameter inner ring lower tolerance
	0,5 mm	Inner diameter inner ring upper tolerance
H	55 mm	Height
D_a	522 mm	Outside Diameter
	0,8 mm	Outside diameter lower tolerance
	0,8 mm	Outside diameter upper tolerance
h_a	50 mm	Width outer ring
h_i	50 mm	Width inner ring
	0,06 mm	Normal radial clearance min.
	0,25 mm	Normal radial clearance max.
	0,11 mm	Normal axial clearance min.
	0,41 mm	Normal axial clearance max.
$\approx m$	41,023 kg	Weight



Dimensions

D_i	432 mm	Inner diameter outer ring
d_a	434 mm	Outside diameter inner ring
d_B	18 mm	Fixing bore
L_a	490 mm	Pitchcircle diameter fixing holes outer ring
n_a	20	Number of fixing holes in outer ring
L_i	376 mm	Pitchcircle diameter fixing holes inner ring
n_i	20	Number of fixing holes in inner ring
$F_{r\text{ zul}}$	156.000 N	Max. radial load fixing screws (friction locking)


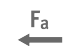




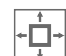
Temperature range

T_{min}	-25 °C	Operating temperature min.
T_{max}	80 °C	Operating temperature max.

Calculation factors

C_a	315.000 N	Basic dynamic load rating, axial
C_{0a}	910.000 N	Basic static load rating, axial
C_r	285.000 N	Basic dynamic load rating, radial (for radial load only)
C_{0r}	415.000 N	Basic static load rating, radial (for radial load only)

Characteristics

	Radial load
	Axial load in one direction
	Axial load in two directions
	Moments about all axes
	Grease Lubrication
	Sealed on both sides
	Large bearing