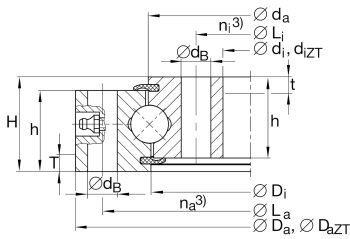


**VU300574** [↗](#)

Slewing ring, 4 point contact bearing, without gear teeth

Four point contact bearings without gear teeth, sealed on both sides

## Technical information

**Main Dimensions & Performance Data**

$d_i$	468 mm	Inner diameter inner ring
	0,8 mm	Inner diameter inner ring lower tolerance
	0,8 mm	Inner diameter inner ring upper tolerance
H	68 mm	Height
$D_a$	680 mm	Outside Diameter
	0,8 mm	Outside diameter lower tolerance
	0,8 mm	Outside diameter upper tolerance
$h_a$	61 mm	Width outer ring
$h_i$	61 mm	Width inner ring
	0,08 mm	Normal radial clearance min.
	0,3 mm	Normal radial clearance max.
	0,13 mm	Normal axial clearance min.
	0,49 mm	Normal axial clearance max.
$\approx m$	82 kg	Weight



## Dimensions

$D_i$	572 mm	Inner diameter outer ring
$d_a$	576 mm	Outside diameter inner ring
$d_B$	22 mm	Fixing bore
$L_a$	640 mm	Pitchcircle diameter fixing holes outer ring
$n_a$	20	Number of fixing holes in outer ring
$L_i$	508 mm	Pitchcircle diameter fixing holes inner ring
$n_i$	20	Number of fixing holes in inner ring
$F_{r\text{ zul}}$	242.000 N	Max. radial load fixing screws (friction locking)


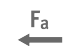





## Temperature range

$T_{\text{min}}$	-25 °C	Operating temperature min.
$T_{\text{max}}$	80 °C	Operating temperature max.

## Calculation factors

$C_a$	420.000 N	Basic dynamic load rating, axial
$C_{0a}$	1.480.000 N	Basic static load rating, axial
$C_r$	380.000 N	Basic dynamic load rating, radial (for radial load only)
$C_{0r}$	680.000 N	Basic static load rating, radial (for radial load only)

## Characteristics

	Radial load
	Axial load in one direction
	Axial load in two directions
	Moments about all axes
	Grease Lubrication
	Sealed on both sides
	Large bearing