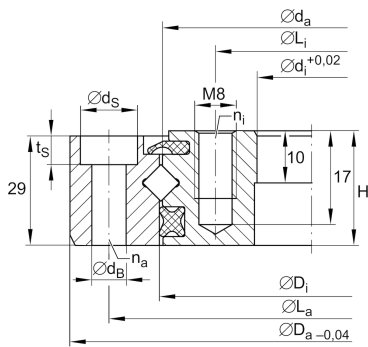


**XU080120**

Slewing ring, Crossed roller bearing, without gear teeth

Crossed roller bearings without gear teeth,  
sealed on both sides

## Technical information

**Main Dimensions & Performance Data**

|             |          |                                  |
|-------------|----------|----------------------------------|
| $d_i$       | 69 mm    | Bore Diameter                    |
|             | 0,02 mm  | Bore diameter upper tolerance    |
|             | 0 mm     | Bore diameter lower tolerance    |
| $t$         | 10 mm    | Length centering inner ring      |
| $D_a$       | 170 mm   | Outside Diameter                 |
|             | 0 mm     | Outside diameter upper tolerance |
|             | -0,04 mm | Outside diameter lower tolerance |
| $H$         | 30 mm    | Height                           |
| $\approx m$ | 3,902 kg | Weight                           |



## Dimensions

|             |          |  |
|-------------|----------|--|
| $h_a$       | 29 mm    | Height outer ring                            |
| $L_a$       | 148 mm   | Pitchcircle diameter fixing holes outer ring |
| $n_a$       | 6        | Number of fixing holes in outer ring         |
| $d_B$       | 9 mm     | Fixing bore                                  |
| $d_S$       | 15 mm    | Counterbore diameter of fixing holes         |
| $t_S$       | 9 mm     | Counterbore depth of fixing holes            |
| $L_i$       | 90 mm    | Pitchcircle diameter fixing holes inner ring |
| $n_i$       | 6        | Number of fixing holes in inner ring         |
|             | M8       | Tread fixing bore                            |
| $t_G$       | 17 mm    | Thread depth                                 |
| $VSP_{min}$ | 0,005 mm | Min. bearing preload                         |
| $VSP_{max}$ | 0,008 mm | Maximum bearing preload                      |

## Temperature range

|           |        |                            |
|-----------|--------|----------------------------|
| $T_{min}$ | -30 °C | Operating temperature min. |
| $T_{max}$ | 80 °C  | Operating temperature max. |

## Calculation factors

|             |          |  |
|-------------|----------|--|
| $C_a$       | 49.000 N | Basic dynamic load rating, axial                         |
| $C_r$       | 35.000 N | Basic dynamic load rating, radial (for radial load only) |
| $C_{0a}$    | 62.000 N | Basic static load rating, axial                          |
| $C_{0r}$    | 30.500 N | Basic static load rating, radial (for radial load only)  |
| $F_{R zu.}$ | 10.500 N | Max. radial load screws                                  |



### Characteristics

---



Radial load



Axial load in one direction



Axial load in two directions



Moments about all axes



Grease Lubrication



Sealed on both sides