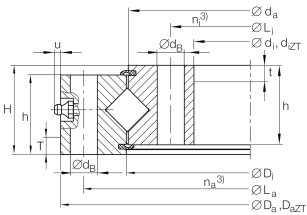


**XU120179** [↗](#)

Slewing ring, Crossed roller bearing, without gear teeth

Crossed roller bearings without gear teeth,  
sealed on both sides

## Technical information

**Main Dimensions & Performance Data**

$d_i$	124,5 mm	Bore Diameter
	0,5 mm	Bore diameter upper tolerance
	-0,5 mm	Bore diameter lower tolerance
$D_a$	234 mm	Outside Diameter
	0,5 mm	Outside diameter upper tolerance
	-0,5 mm	Outside diameter lower tolerance
H	35 mm	Height
$\approx m$	6,358 kg	Weight



## Dimensions

$D_i$	180 mm	Inner diameter outer ring
	0,2 mm	Inner diameter outer ring upper tolerance
	-0,2 mm	Inner diameter outer ring lower tolerance
$h_a$	30 mm	Height outer ring
$L_a$	214 mm	Pitchcircle diameter fixing holes outer ring
$n_a$	12	Number of fixing holes in outer ring
$d_a$	178 mm	Outside diameter inner ring
	0,2 mm	Outside diameter inner ring upper tolerance
	-0,2 mm	Outside diameter inner ring lower tolerance
$h_i$	30 mm	Height of inner ring
$d_B$	11 mm	Fixing bore
$L_i$	144,5 mm	Pitchcircle diameter fixing holes inner ring
$n_i$	12	Number of fixing holes in inner ring
$u_{max}$	6 mm	Max. protrusion lubrication nipple
$VSP_{max}$	0,02 mm	Maximum bearing preload

## Temperature range

$T_{min}$	-30 °C	Operating temperature min.
$T_{max}$	80 °C	Operating temperature max.

## Calculation factors

$C_a$	105.000 N	Basic dynamic load rating, axial
$C_r$	75.000 N	Basic dynamic load rating, radial (for radial load only)
$C_{0a}$	194.000 N	Basic static load rating, axial
$C_{0r}$	95.000 N	Basic static load rating, radial (for radial load only)
$F_{Rzu}$	33.600 N	Max. radial load screws



### Characteristics

---



Radial load



Axial load in one direction



Axial load in two directions



Moments about all axes



Grease Lubrication



Sealed on both sides