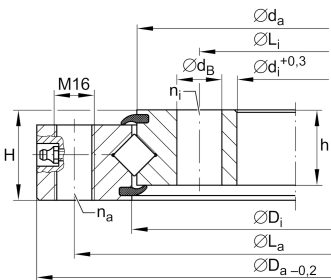


**XU120222**

Slewing ring, Crossed roller bearing, without gear teeth

Crossed roller bearings without gear teeth,
sealed on both sides

Technical information

**Main Dimensions & Performance Data**

d_i	140 mm	Bore Diameter
	0,3 mm	Bore diameter upper tolerance
	0 mm	Bore diameter lower tolerance
D_a	300 mm	Outside Diameter
	0 mm	Outside diameter upper tolerance
	-0,2 mm	Outside diameter lower tolerance
H	36 mm	Height
$\approx m$	11,15 kg	Weight



Dimensions

D_i	224 mm	Inner diameter outer ring
h_a	30 mm	Height outer ring
L_a	270 mm	Pitchcircle diameter fixing holes outer ring
n_a	12	Number of fixing holes in outer ring
d_a	220 mm	Outside diameter inner ring
h_i	30 mm	Height of inner ring
d_B	18 mm	Fixing bore
L_i	170 mm	Pitchcircle diameter fixing holes inner ring
n_i	12	Number of fixing holes in inner ring
	M16	Tread fixing bore
	0,01 mm	Normal radial clearance min.
	0,03 mm	Normal radial clearance max.
	0,02 mm	Normal axial tilting clearance min.
	0,06 mm	Normal axial tilting clearance max.

Temperature range

T_{min}	-30 °C	Operating temperature min.
T_{max}	80 °C	Operating temperature max.

Calculation factors

C_a	116.000 N	Basic dynamic load rating, axial
C_r	83.000 N	Basic dynamic load rating, radial (for radial load only)
C_{0a}	305.000 N	Basic static load rating, axial
C_{0r}	149.000 N	Basic static load rating, radial (for radial load only)
F_{rzu}	65.500 N	Max. radial load screws



Characteristics



Radial load



Axial load in one direction



Axial load in two directions



Moments about all axes



Grease Lubrication



Sealed on both sides