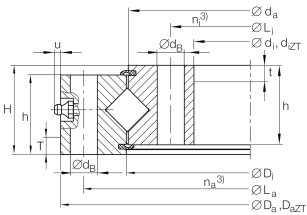


**XU160405** [↗](#)

Slewing ring, Crossed roller bearing, without gear teeth

Crossed roller bearings without gear teeth,
sealed on both sides

Technical information

**Main Dimensions & Performance Data**

d_i	336 mm	Bore Diameter
D_a	474 mm	Outside Diameter
H	46 mm	Height
$\approx m$	24,1 kg	Weight

Dimensions

D_i	406 mm	Inner diameter outer ring
h_a	41 mm	Height outer ring
L_a	450 mm	Pitchcircle diameter fixing holes outer ring
n_a	30	Number of fixing holes in outer ring
d_a	404 mm	Outside diameter inner ring
h_i	41 mm	Height of inner ring
d_B	14 mm	Fixing bore
L_i	360 mm	Pitchcircle diameter fixing holes inner ring
n_i	30	Number of fixing holes in inner ring
u_{max}	3,5 mm	Max. protrusion lubrication nipple
VSP_{min}	0 mm	Min. bearing preload
VSP_{max}	0,02 mm	Maximum bearing preload









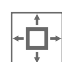
Temperature range

T_{\min}	-30 °C	Operating temperature min.
T_{\max}	80 °C	Operating temperature max.

Calculation factors

C_a	250.000 N	Basic dynamic load rating, axial
C_r	179.000 N	Basic dynamic load rating, radial (for radial load only)
C_{0a}	630.000 N	Basic static load rating, axial
C_{0r}	310.000 N	Basic static load rating, radial (for radial load only)
$F_{r\text{ zu.}}$	123.900 N	Max. radial load screws

Characteristics

-  Radial load
-  Axial load in one direction
-  Axial load in two directions
-  Moments about all axes
-  Grease Lubrication
-  Sealed on both sides
-  Large bearing