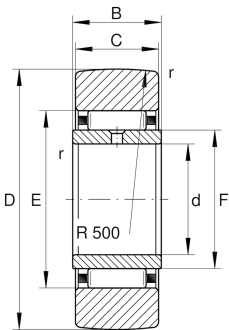


**STO35**

Yoke type track roller

Yoke type track rollers STO..., single row needle roller bearings with particularly thick-walled outer ring, needle roller and cage assembly and an inner ring, without axial guidance of the outer ring, open, inner ring, outer ring and needle roller and cage assembly can be mounted separately

Technical information



Your current product variant

Sealing	Without	
Outer ring profile	R500	R500
Relubrication facility	IR	Via inner ring lubrication hole

Main Dimensions & Performance Data

d	35 mm	Bore diameter
D	72 mm	Outside diameter
C	19,8 mm	Width, outer ring
$C_{r w}$	25.000 N	Basic dynamic load rating, radial
$C_{0 r w}$	41.000 N	Basic static load rating, radial
$C_{u r w}$	5.500 N	Fatigue load limit, radial
$n_{D G}$	1.100 1/min	Speed on permanent grease lubrication
$\approx m$	438,76 g	Weight

Dimensions

B	20 mm	Width, inner ring
E	50 mm	Raceway diameter outer ring
r_{min}	0,6 mm	Minimum chamfer dimension
F	42 mm	Raceway diameter inner ring
R	500 mm	Radius of outer ring outside profile



Characteristics



Radial load



Grease Lubrication



Oil Lubrication



Not sealed