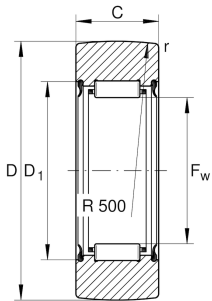


**RNA22/8-2RSR** [↗](#)

Yoke type track roller

Yoke type track rollers RNA22...-2RSR, single row needle roller bearings with particularly thick-walled outer ring, needle roller and cage assembly, without inner ring, without axial guidance of the outer ring, lip seal radial sealing action on both sides, inner ring can be mounted separately

Technical information



Your current product variant

Sealing	2RSR	Lip seal on both sides
Outer ring profile	R500	R500

Main Dimensions & Performance Data

D	24 mm	Outside diameter
F _w	12 mm	Under roller diameter
C	11,8 mm	Width, outer ring
C _{r w}	4.100 N	Basic dynamic load rating, radial
C _{0r w}	4.300 N	Basic static load rating, radial
C _{ur w}	650 N	Fatigue load limit, radial
n _{D G}	7.000 1/min	Speed on permanent grease lubrication
≈m	25,3 g	Weight

Dimensions

D _{1 min}	18 mm	Minimum mounting dimension
r _{min}	0,3 mm	Minimum chamfer dimension
R	500 mm	Radius of outer ring outside profile



Characteristics



Radial load



Lifetime lubrication, freedom from maintenance



Grease Lubrication



Sealed on both sides