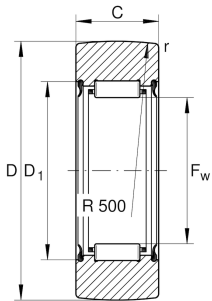


## RNA2205-2RSR [↗](#)

### Yoke type track roller

Yoke type track rollers RNA22...-2RSR, single row needle roller bearings with particularly thick-walled outer ring, needle roller and cage assembly, without inner ring, without axial guidance of the outer ring, lip seal radial sealing action on both sides, inner ring can be mounted separately

## Technical information



### Your current product variant

Type of Seal	2RSR	Lip seal on both sides
Outer ring profile	R500	R500

### Main Dimensions & Performance Data

D	52 mm	Outside diameter
F <sub>w</sub>	30 mm	Under roller diameter
C	17,8 mm	Width, outer ring
C <sub>r w</sub>	14.500 N	Basic dynamic load rating, radial
C <sub>0 r w</sub>	20.300 N	Basic static load rating, radial
C <sub>u r w</sub>	2.950 N	Fatigue load limit, radial
n <sub>D G</sub>	1.800 1/min	Speed on permanent grease lubrication
≈m	166,2 g	Weight

### Dimensions

D <sub>1 min</sub>	38 mm	Minimum mounting dimension
r <sub>min</sub>	1 mm	Minimum chamfer dimension
R	500 mm	Radius of outer ring outside profile



### Characteristics

---



Radial load



Lifetime lubrication, freedom from maintenance



Grease Lubrication



Sealed on both sides