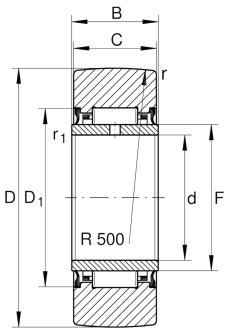


## NA2207-2RSR [↗](#)

### Yoke type track roller

Yoke type track rollers NA22...-2RSR, single row needle roller bearings with particularly thick-walled outer ring, needle roller and cage assembly and an inner ring, without axial guidance of the outer ring, lip seal radial sealing action on both sides, inner ring can be mounted separately

## Technical information



### Your current product variant

Sealing	2RSR	Lip seal on both sides
Outer ring profile	R500	R500
Relubrication facility	IR	Via inner ring lubrication hole

### Main Dimensions & Performance Data

D	72 mm	Outside diameter
F	42 mm	Raceway diameter inner ring
C	22,7 mm	Width, outer ring
$C_{r w}$	21.500 N	Basic dynamic load rating, radial
$C_{0r w}$	36.500 N	Basic static load rating, radial
$C_{ur w}$	5.300 N	Fatigue load limit, radial
$n_{DG}$	1.100 1/min	Speed on permanent grease lubrication
$\approx m$	0,505 kg	Weight

### Dimensions

d	35 mm	Bore diameter
B	23 mm	Width of the bearing
$D_{1 \text{ min}}$	50 mm	Minimum mounting dimension
$r_{\text{min}}$	1,1 mm	Minimum chamfer dimension
$r_{1 \text{ min}}$	0,6 mm	Minimum chamfer dimension
R	500 mm	Radius of outer ring outside profile



### Characteristics

---



Radial load



Lifetime lubrication, freedom from maintenance



Grease Lubrication



Sealed on both sides