

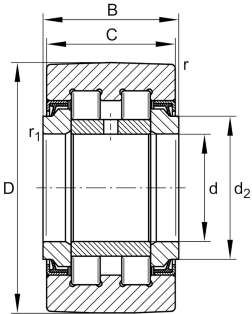
**PWTR15-2RS-XL**

## Yoke type track roller

Yoke type track rollers PWTR..-2RS-XL, double row cylindrical roller bearings with particularly thick-walled outer ring, with a central rib, full complement cylindrical roller set and an inner ring, the outer ring is guided axially by the central rib and rolling elements, protected lip seal on both sides, X-life design

X-life

## Technical information



## Your current product variant

Type of Sealing	2RS	Protected lip seal on both sides
Outer ring profile	IOP	Optimized INA-profile
Relubrication	IR	Via inner ring

## Main Dimensions &amp; Performance Data

d	15 mm	Bore diameter
D	35 mm	Outside diameter
B	19 mm	Width of the bearing
$C_{rw}$	12.500 N	Basic dynamic load rating, radial
$C_{0rw}$	14.900 N	Basic static load rating, radial
$C_{urw}$	1.790 N	Fatigue load limit, radial
$n_{DG}$	6.000 1/min	Speed on permanent grease lubrication
$F_{0rper}$	14.900 N	Permissible static load, radial
$F_{rper}$	10.600 N	Permissible dynamic load outer ring, radial
$\approx m$	0,096 kg	Weight



### Dimensions

C	18 mm	Width, outer ring
d <sub>2</sub>	20 mm	Stop diameter of thrust washer
r <sub>min</sub>	0,6 mm	Minimum chamfer dimension
r <sub>1 min</sub>	0,3 mm	Minimum chamfer dimension

### Characteristics

-  Radial load
-  Axial load in one direction
-  Axial load in two directions
-  Lifetime lubrication, freedom from maintenance
-  Grease Lubrication
-  Sealed on both sides