

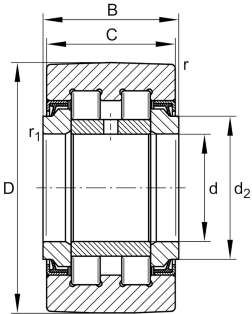
**PWTR30-2RS-XL**

Yoke type track roller

Yoke type track rollers PWTR..-2RS-XL, double row cylindrical roller bearings with particularly thick-walled outer ring, with a central rib, full complement cylindrical roller set and an inner ring, the outer ring is guided axially by the central rib and rolling elements, protected lip seal on both sides, X-life design

X-life

Technical information



Your current product variant

Type of Seal	2RS	Protected lip seal on both sides
Outer ring profile	IOP	Optimized INA-profile
Relubrication	IR	Via inner ring

Main Dimensions & Performance Data

d	30 mm	Bore diameter
D	62 mm	Outside diameter
B	29 mm	Width of the bearing
C_{rw}	35.000 N	Basic dynamic load rating, radial
C_{0rw}	44.500 N	Basic static load rating, radial
C_{urw}	6.000 N	Fatigue load limit, radial
n_{DG}	2.200 1/min	Speed on permanent grease lubrication
F_{0rper}	44.500 N	Permissible static load, radial
F_{rper}	29.000 N	Permissible dynamic load outer ring, radial
$\approx m$	0,452 kg	Weight



Dimensions

C	28 mm	Width, outer ring
d ₂	38 mm	Stop diameter of thrust washer
r _{min}	1 mm	Minimum chamfer dimension
r _{1 min}	0,5 mm	Minimum chamfer dimension

Characteristics

-  Radial load
-  Axial load in one direction
-  Axial load in two directions
-  Lifetime lubrication, freedom from maintenance
-  Grease Lubrication
-  Sealed on both sides