

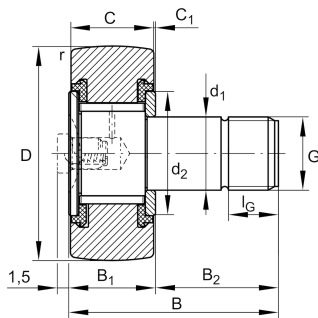


KRV19-SK-PP

Stud type track roller

Stud type track rollers KRV...-SK-PP-A, single row needle roller bearings with particularly thick-walled outer ring, full complement needle roller set and with a solid roller stud with fixing thread and a mounting aid, axial guidance of outer ring is provided by the plastic axial plain washers, contact flange and contact washer, three-stage sealing by plastic axial plain washer on both sides, without eccentric collar, assembling aid hexagonal socket only on the flange side end face, no relubrication facility

Technical information



Your current product variant

Type of Seal	PP	Three-stage sealing by plastic axial plain washer on both sides
Outer ring profile	IOP	Optimized INA-profile
Grease nipples	Without	Without
Relubrication	Without	Without
Assembling aid head	SK	Hexagon socket

Main Dimensions & Performance Data

D	19 mm	Outside diameter
d ₁	8 mm	Fit diameter of roller stud / stud
B	32 mm	Width
C _{r w}	5.400 N	Basic dynamic load rating, radial
C _{0 r w}	8.100 N	Basic static load rating, radial
C _{u r w}	1.190 N	Fatigue load limit, radial
n _{D G}	3.100 1/min	Speed on permanent grease lubrication
≈m	29 g	Weight



Dimensions

B ₁	12,2 mm	Width of thrust washer
B ₂	20 mm	Bolt/stud length effectively
C	11 mm	Width, outer ring
C ₁	0,6 mm	Protrusion outer ring to thrust washer
r _{min}	0,15 mm	Minimum chamfer dimension
d ₂	15 mm	Stop diameter of thrust washer
G	M8	Thread
l _G	10 mm	Thread length
W	4 mm	Width of flats

Additional information

	NIPA1	Drive-fit lubrication nipple
	1,5 mm	Protrusion lubrication nipple
M _A	8 Nm	Tightening torque nut