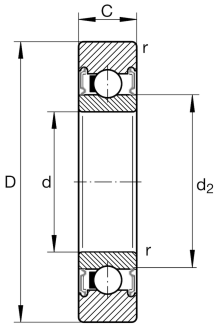
**LR209-X-2RS** [↗](#)

## Yoke type track roller

Yoke type track rollers LR2...-2RS/2RSR, single row self-retaining ball bearings with particularly thick-walled outer ring, ball and cage assembly and an inner ring, axial guidance of outer ring is provided by the balls, lip seal on both sides, with axial sealing action/with radial sealing action

## Technical information



## Your current product variant

Type of seal	2RS	Lip seal on both sides, with axial sealing action
Outer ring profile	X	Cylindrical profile
Relubrication facility	Without	Without

## Main Dimensions &amp; Performance Data

D	90 mm	Outside diameter
d	45 mm	Bore diameter
C	19 mm	Height
$C_{rW}$	23.700 N	Basic dynamic load rating, radial
$C_{0rW}$	14.100 N	Basic static load rating, radial
$C_{urW}$	750 N	Fatigue load limit, radial
$n_{DG}$	3.600 1/min	Speed on permanent grease lubrication
$m$	0,48 kg	Weight



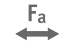



## Dimensions

$d_2$	53,2 mm	Diameter of thrust washer
$r_{min}$	1,1 mm	Minimum chamfer dimension
R	500 mm	Radius of outer ring outside profile



### Characteristics

---

-  Radial load
-  Axial load in one direction
-  Axial load in two directions
-  Lifetime lubrication, freedom from maintenance
-  Grease Lubrication
-  Sealed on both sides