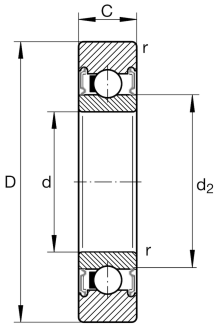
**LR200-X-2RSR**

Yoke type track roller

Yoke type track rollers LR2...-2RS/2RSR, single row self-retaining ball bearings with particularly thick-walled outer ring, ball and cage assembly and an inner ring, axial guidance of outer ring is provided by the balls, lip seal on both sides, with axial sealing action/with radial sealing action

Technical information



Your current product variant

Type of Sealing	2RSR	Lip seal on both sides, with radial sealing action
Outer ring profile	X	Cylindrical profile
Relubrication	Without	Without

Main Dimensions & Performance Data

D	32 mm	Outside diameter
d	10 mm	Bore diameter
C	9 mm	Height
C_{rw}	5.100 N	Basic dynamic load rating, radial
C_{0rw}	2.380 N	Basic static load rating, radial
C_{urw}	120 N	Fatigue load limit, radial
n_{DG}	13.000 1/min	Speed on permanent grease lubrication
m	0,05 kg	Weight

Dimensions

d_2	16,6 mm	Diameter of thrust washer
r_{min}	0,6 mm	Minimum chamfer dimension
R	500 mm	Radius of outer ring outside profile



Characteristics



Radial load



Axial load in one direction



Axial load in two directions



Lifetime lubrication, freedom from maintenance



Grease Lubrication



Sealed on both sides