

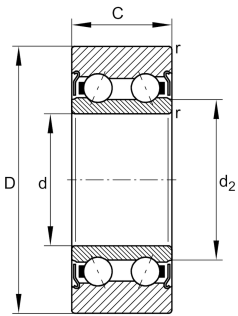
**LR5202-X-2Z-TVH-XL**

Yoke type track roller

Yoke type track rollers LR52..-2Z-TVH-XL, double row self-retaining angular contact ball bearings with particularly thick-walled outer ring, ball and cage assembly and an inner ring, axial guidance of outer ring is provided by the balls, lubrication hole in inner ring on request, sealing shield on both sides, cage made from glass fibre reinforced polyamide, X-life design

X-life

Technical information



Your current product variant

Sealing	2Z	Sealing shield on both sides
Outer ring profile	X	Cylindrical profile
Relubrication facility	Without	Without
Cage	TVH	Solid cage made of glass-fiber reinforced polyamid PA66

Main Dimensions & Performance Data

D	40 mm	Outside diameter
d	15 mm	Bore diameter
C	15,9 mm	Height
C_{rw}	10.800 N	Basic dynamic load rating, radial
C_{0rw}	7.700 N	Basic static load rating, radial
C_{urw}	390 N	Fatigue load limit, radial
n_{DG}	10.200 1/min	Speed on permanent grease lubrication
F_{rper}	7.700 N	Permissible dynamic load outer ring, radial
m	0,11 kg	Weight



View product details on medias

21.04.2026, 13:18:12 UTC

SCHAEFFLER

Dimensions

d_2	21 mm	Diameter of thrust washer
r_{min}	0,6 mm	Minimum chamfer dimension
R	500 mm	Radius of outer ring outside profile