

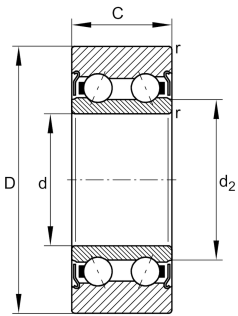
**LR5203-X-2Z-TVH-XL**

Yoke type track roller

Yoke type track rollers LR52..-2Z-TVH-XL, double row self-retaining angular contact ball bearings with particularly thick-walled outer ring, ball and cage assembly and an inner ring, axial guidance of outer ring is provided by the balls, lubrication hole in inner ring on request, sealing shield on both sides, cage made from glass fibre reinforced polyamide, X-life design

X-life

Technical information



Your current product variant

| | | |
|------------------------|---------|---|
| Sealing | 2Z | Sealing shield on both sides |
| Outer ring profile | X | Cylindrical profile |
| Relubrication facility | Without | Without |
| Cage | TVH | Solid cage made of glass-fiber reinforced polyamid PA66 |

Main Dimensions & Performance Data

| | | |
|------------|-------------|---------------------------------------|
| D | 47 mm | Outside diameter |
| d | 17 mm | Bore diameter |
| C | 17,5 mm | Height |
| C_{rw} | 13.700 N | Effective dynamic load rating, radial |
| C_{0rw} | 10.100 N | Effective static load rating, radial |
| C_{urw} | 510 N | Effective fatigue limit load, radial |
| n_{DG} | 8.900 1/min | Speed on permanent grease lubrication |
| F_{rper} | 10.100 N | Permissible dynamic load, radial |
| m | 0,17 kg | Weight |



Dimensions

| | | |
|------------------|---------|--------------------------------------|
| d ₂ | 24,4 mm | Diameter of thrust washer |
| r _{min} | 0,6 mm | Minimum chamfer dimension |
| R | 500 mm | Radius of outer ring outside profile |